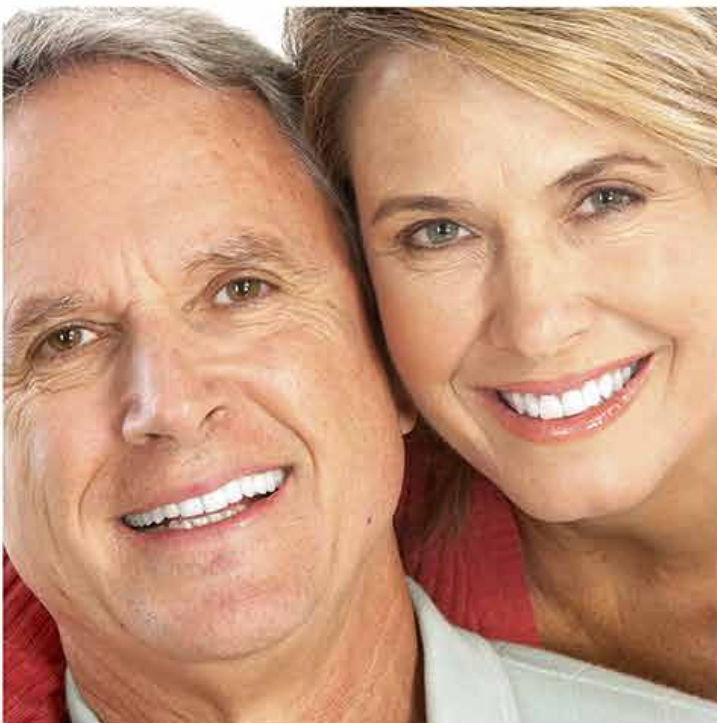




DEVONDENT



PRODUCT
CATALOGUE



18

INDEX

Nano-Hybrid Composite	3
Micro-Hybrid Composite	5
Flowable Composite`	7
Devon-Fill Glass Ionomer Filling	9
Devon-Cem Glass Ionomer Cement	11
Devodent - Zinc Phosphate Cement	12
Devodent - Polycarboxylate Cement	13
Devodent Dual Cure Composite Luting Cement	15
Devodent Etchant Gel & Liquid	17
Devodent Pit And Fissure Sealant	19
Devon Paste	21
Devon White Fluoride Varnish	22
Devodent Copal Varnish & Solvent	23
Devodent Root Canal Filling Material	25
Devon-top	26
Devodent Automix Dual Core Build-Up Material	27
Devodent Chemical Cure Core Build-Up Material	29
Devon Core - Automix Syringe	31

A resin composite with unique nanofiller technology. Formulated with nanocluster filler particles, the composite is purposed to combine the strength of a hybrid and the polish of a microfil. Nanomers are discrete nanoglomerated particles of 7 nm in size. Nanoclusters are loosely bound agglomerates of nano-sized particles. The agglomerates act as a single combination of non-agglomerated 7 nm nanosilica filler and aggregated schott glass / silica nanocluster filler. The cluster particle size range is .7 microns. The filler loading is 74% by weight. This reportedly provides increased filler loading, better physical properties and improved polish retention when compared to composites containing only nanoclusters

Nano-Hybrid Composite



Benefits and Features

- Easy to control during placement
- Not sensitive to ambient light
- Adapts well to cavity preparations
- Does not stick to the placement instruments
- Can be contoured to the desired shape before curing
- Highly rated for blending with tooth structure, radiopacity, and ease of finishing
- Finished and polished to a high luster
- Fluoride release

KITS

Devon-Dent Nano-Hybrid Composite 7 Syringes (DD-01-07)

7 x 4.5g syringes
 (A1, A2, A3, A3.5, B2, C1, UO),
 7ml one-step bonding adhesive bottle,
 7ml surface sealant bottle,
 4gm etchant gel syringe,
 15 brush tips,
 5 dispensing needle tips,
 1 brush holder,
 2 mixing wells and IFU

Devon -Dent Nano-Hybrid Composite 4 Syringes (DD-01-04)

4 x 4.5 g syringes
 (A2, A3, A3.5, B2),
 7ml one-step
 bonding adhesive bottle, 7ml surface sealant
 bottle,
 4gm etchant gel syringe,
 15 brush tips,
 5 dispensing needle tips,
 1 brush holder,
 2 mixing wells and IFU

Devon-Dent Nano-Hybrid Composite 2 Syringes (DD-01-02)

2 x 4.5g syringes
 (A2, A3),
 3ml one-step bonding
 adhesive bottle,
 1.2gm etchant gel syringe,
 15 brush tips,
 3 dispensing tips and IFU.

Devon-Dent Nano-Hybrid Composite Refill syringes (4.5g) (DD-01- (shade)

Available
 in
 shades :

A1
 A2
 A3
 A3.5
 A4
 B1
 B2
 B3
 B4
 C1
 C2
 C3
 C4
 D2
 D3
 D4
 OA2
 OA3
 OA3.5
 OA4
 UO
 UD
 DT
 CT
 NT
 ET4
 B
 U
 Y
 OTB
 OTG.

A light cured resin-based dental restorative composite which contains approximately 76% by weight (60% by volume) inorganic filler with an average particle size of 0.7 microns. Ideally suited for anterior and posterior restorations. With high polish, handling characteristics and esthetic properties most preferred by dentists

Micro-Hybrid Composite



KITS

Devon-Dent Micro-Hybrid Composite 7 Syringes (DD-02-07)

7 x 4.5g syringes
(A1, A2, A3, A3.5, B2, C1, UO),
7ml one-step bonding adhesive bottle, 7ml
surface sealant bottle,
4gm etchant gel syringe,
15 brush tips, 5 dispensing needle tips,
1 brush holder,
2 mixing wells and IFU

Devon-Dent Micro -Hybrid Composite 4 Syringes (DD-02-04)

4 x 4.5 g syringes
(A2, A3, A3.5, B2),
7ml one-step
bonding adhesive bottle,
7ml surface sealant bottle,
4gm etchant gel syringe,
15 brush tips, 5 dispensing needle tips,
1 brush holder,
2 mixing wells and IFU.

Devon-Dent Micro -Hybrid Composite 2 Syringes (DD-02-02)

2 x 4.5g syringes
(A2, A3),
3ml one-step bonding
adhesive bottle,
1.2gm etchant gel syringe,
15 brush tips,

Devon-Dent Micro -Hybrid Composite Refill syringes (4.5g) (DD-02-(shade)

Available in shades :

A1
A2
A3
A3.5
A4
B1
B2
B3
B4
C1
C2
C3
C4
D2
D3
D4
Incisal
Opaque
OA2
OA3
OA4

Highly polishable, 67% filled, esthetic composite used for all types of cavity preparations.

The composite has a nominal particle size of 0.7 micron. An ideal choice for both anterior and posterior applications and also as a pit and fissure sealant. Ideal for repairing small defects and filling in cervical gaps caused by toothbrush erosion and receding gums.

Also used to eliminate undercuts prior to taking impressions for composite inlays and to line cavities and fill in difficult access areas prior to placing condensable composites.

Easy to polish to a high luster. Has high compressive strength as well as low shrinkage, resists wear and staining. Radiopaque for easy identification in radiographs.

Flowable Composite`



KITS

- Available in 18 Vita shades
- Micro-Hybrid formula provides strength and polishability
- Fast, deep light activation in only 30 seconds for lighter shades. Deep light activation in 40 seconds for darker shades.
- Radiopaque
- Fluoride releasing
- Low shrinkage
- High compressive strength

4 Syringe Kit (DD-03-04)

4 x 2gm syringes, 20 dispensing tips and IFU
A2, A3, A3.5, B2

Refill syringes (2g) (DD-03-(shade))

Available in shades :

A1

A2

A3

A3.5

A4

B1

B2

B3

B4

C1

C2

C3

C4

D2

D3

D4

Incisal

Opaque

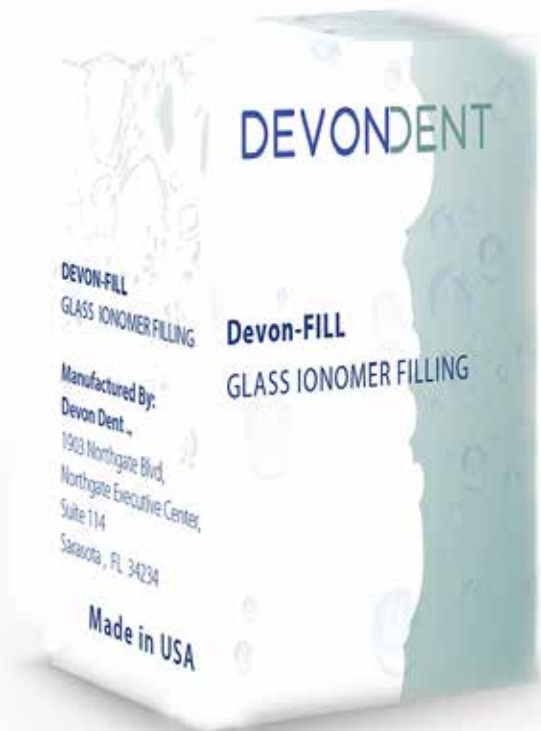
OA2

OA3

OA4

A self-cured glass ionomer restorative. Its high surface hardness provides for a durable restoration

Devon-Fill Glass Ionomer Filling



KITS

- Available in multiple shades
- Fluoride release
- Radiopaque
- Superior tear and bond strengths

Devo-Fill Restorative Kit 18g/17.5ml (DD-04-15)

15g powder bottle, 10ml liquid bottle, accessories and IFU

Devo-Fill Restorative Kit 10g/6ml (DD-04-10)

10g powder bottle, 6ml liquid bottle, accessories and IFU

Devo-Fill Restorative Powder Refill (DD-04-R15)

15g powder bottle

Devo-Fill Restorative Liquid Refill (DD-04-R10)

10ml liquid bottle

Powder/Liquid System

An advanced formulation designed as a multi-purpose final cement for the cementation of crowns, bridges, inlays and onlays, as well as certain orthodontic applications.

The cement chemically bonds to enamel, dentin and metal structures. Ideal for use as a liner under composite, amalgam or porcelain restorations where a thin lining is indicated.

The cement is radiopaque and has cariostatic properties by naturally releasing fluoride.

Devon-Cem Glass Ionomer Cement



KITS

DIVON-CEM Glass Ionomer Cement Kit (DD-05-15)

15g powder, 10 ml liquid, accessories and IFU

DIVO-CEM Glass Ionomer Cement Kit (DD-05-10)

10g powder, 6 ml liquid, accessories and IFU

Devondent Zinc Phosphate Cement

A very high strength permanent cement (131 Mpa compressive strength) representing perhaps the oldest and most well accustomed cement still in use.

It also provides a good insulating layer against thermal shock

KITS

DEVONDENT - Zinc Phosphate Cement Kit (DD-06-32)

32g powder bottle, 17.5ml liquid bottle, measuring scoop, mixing pad and IFU.

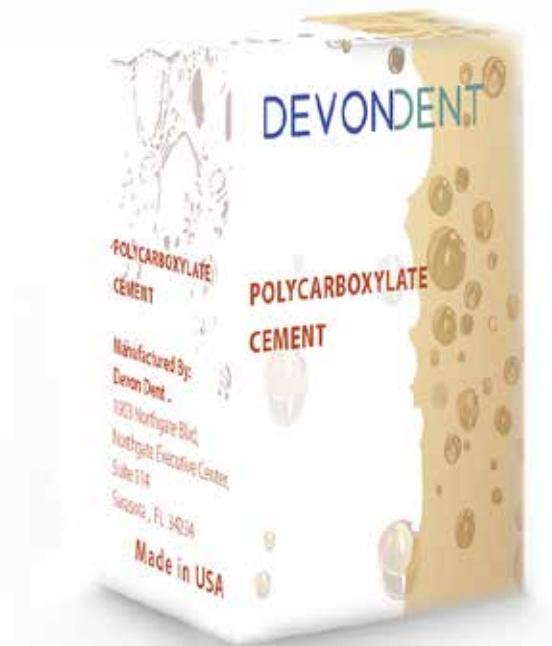
DEVONDENT - Zinc Phosphate Cement Kit (DD-07-15)

15g powder bottle, 10 ml liquid bottle, measuring scoop, mixing pad and IFU



Used primarily for final cementation of crowns and bridges. This luting cement has good biocompatibility, low film thickness of 13-18 microns and good insulating characteristic. Material of choice for sensitive teeth and for preparations close to the pulp

Devondent - Polycarboxylate Cement



KITS

DEVONDENT Polycarboxylate Cement Kit (DD-06-32)

32g powder bottle, 17.5ml liquid bottle, measuring scoop, mixing pad and IFU

DEVONDENT Polycarboxylate Cement Kit (DD-06-15)

15g powder bottle, 10 ml liquid bottle, measuring scoop, mixing pad and IFU

DEVONDENT



The cement is for use in final cementations of implant prosthesis, crown and bridges, inlays, onlays, veneers, cementation of posts & pins and periodontal splinting

Devondent Dual Cure Composite Luting Cement



TECHNICAL DATA

Composition Glass Ionomer in a Bis-GMA based matrix of dental resins, activator, catalyst and pigments

- | | |
|------------------------|-----------|
| • Working time | 2 Minutes |
| • Setting time | 5 Minutes |
| • Compressive strength | 266 MPa |
| • Flexural strength | 133 MPa |

Benefits and Features

- Quick cementation
- Automix handheld syringe
- Convenient, economical and especially useful for multi-operatory practices.
- No mixing, no air bubbles, no wasted material due to over mixing.
- Ensures, predictable, accurate, consistent and homogeneous mix every time.
- Minimal heat generated
- Protects pulps
- Radiopaque
- Easy identification on x-rays
- Low film thickness
- Provides easy placement of crowns and bridges
- Fluoride release
- Reduces secondary caries

Available in shades :

A2
A4
Blue
White
Opaque

KITS

1 Syringe Kits (10g Syringe) A2 (DD-08-A2)

(5 mixing tips, 5 intra oral tips and IFU)

1 Syringe Kits (10g Syringe) A4 (DD-08-A4)

(5 mixing tips, 5 intra oral tips and IFU)

1 Syringe Kits (10g Syringe) Blue (DD-08-B)

(5 mixing tips, 5 intra oral tips and IFU)

1 Syringe Kits (10g Syringe) white Opaque (DD-08-WO)

(5 mixing tips, 5 intra oral tips and IFU)

1 Syringe Kits (10g Syringe) Transparent (DD-08-TR)

(5 mixing tips, 5 intra oral tips and IFU)

DEVONDENT Etchant Gel/Liquid with 37% phosphoric acid is used for etch bonding procedures.

DEVONDENT Etchant Gel is thixotropic, stays where is placed and will not run. Long shelf life when properly stored.

Washes off clean. Available in several syringe and bottle deliveries.

Devondent Etchant Gel & Liquid



DEVONDENT - Etchant Gel

12gm syringe and 5 dispensing tips 37% BLUE (DD-11-12B)
12gm syringe and 5 dispensing tips 37% GREEN (DD-11-12G)
1.2ml syringe and 3 dispensing tips 37% BLUE (DD-11-1B)
1.2ml syringe and 3 dispensing tips 37% GREEN (DD-11-1G)
4gm syringe and 5 dispensing tips 37% BLUE (DD-11-4B)
4gm syringe and 5 dispensing tips 37% GREEN (DD-11-4G)
8 oz. bottle 37% BLUE (DD-11-8B)
8 oz. bottle 37% GREEN (DD-11-8G)
7.5ml oval bottle 37% BLUE (DD-11-7B)
7.5ml oval bottle 37% GREEN (DD-11-7G)

DEVONDENT - Etchant Liquid

8 oz. bottle 37% BLUE (DD-11-8BL)
8 oz. bottle 37% GREEN (DD-11-8GL)
7.5ml oval bottle 37% BLUE (DD-11-7BL)
7.5ml oval bottle 37% GREEN (DD-11-7GL)

Bis-GMA based filled sealant resin is formulated specifically for the sealing of small pits and fissures. The flowable sealants have excellent penetration into tight adaptations with high bond strength to the enamel for high wear resistance.

Contains fluoride for effective cavity protection. Available in single component light cure or chemical cure formulations.

Available in opaque and clear formulations

Devondent Pit And Fissure Sealant



**DEVONDENT Light Cure Pit and Fissure
Sealant Kit in Bottles
(DD-12-3)**

2 x 3ml sealant bottles,
7.5ml etchant liquid bottle,
accessories and IFU CLEAR
2 x 3ml sealant bottles,
7.5ml etchant liquid bottle,
accessories and IFU OPAQUE

**DEVONDENT Light Cure Pit and Fissure
Sealant Kit in Syringes
(DD-12-1)**

3 x 1.5g sealant syringes,
1.2ml etchant gel syringe,
accessories and IFU CLEAR
3 x 1.5g sealant syringes,
1.2ml etchant gel syringe,
accessories and IFU OPAQUE

**DEVONDENT Light Cure Pit and Fissure
Sealant Refill**

3ml sealant bottle OPAQUE (DD-12-R3O)
1.5g sealant syringe OPAQUE (DD-12-R1O)
3ml sealant bottle CLEAR (DD-12-R3c)
1.5g sealant syringe CLEAR (DD-12-R1C)

**DEVONDENT Chemical Cure Pit and Fissure
Sealant Kit in Bottles
(DD-13-3)**

3ml base sealant bottle,
3ml catalyst sealant bottle,
7.5ml etchant liquid bottle,
accessories and IFU CLEAR
3ml base sealant bottle,
3ml catalyst sealant bottle,
7.5ml etchant liquid bottle,
accessories and IFU OPAQUE

**DEVONDENT Chemical Cure Pit and Fissure
Sealant Refill**

3ml catalyst sealant bottle OPAQUE
(DD-13-R3O)

3ml catalyst sealant bottle CLEAR
(DD-13-R3C)

3ml base sealant bottle (DD-13-R3B)

DEVON-Paste is a blend of polishing and cleaning agents containing sodium fluoride.

The splatter-free formula rinses easily and completely

Available in two grits: Medium grit is recommended for normal cleaning, polishing and plaque removal. Coarse grit is recommended for extra heavy stain, including tobacco and heavy plaque deposits.

Available in six great flavors and two different sizes in 100g and 340g jars. Also available without added color pigments, flavor and fluoride for patients who may be allergic to additives. Using medium grit is the ideal paste prior to composite bonding, sealants and orthodontic bracket applications

Devon Paste



DEVON-Paste Prophylaxis Paste 12oz. Jar (Net Wt. 340 Grams)

Flavore	Size	
	Medium	Coarse
Cherry	(DD-14M- CH)	(DD-14C- CH)
Mint	(DD-14M- M)	(DD-14C- M)
Pina Cloda	(DD-14M- PC)	(DD-14C - PC)
Bubble Gum	(DD-14M- BG)	(DD-14C - BG)
Orange Sherbet	(DD-14M- OS)	(DD-14C - OS)
Raspberry	(DD-14M- R)	(DD-14C - R)
No fluoride & flavor	(DD-14M- 00)	(DD-14C - 00)

Devon White Fluoride Varnish

White Fluoride Varnish (5% sodium fluoride) includes the same benefits as other fluoride varnishes, but without discoloring effects or gritty feel.

Made with xylitol, White Fluoride Varnish goes on white and is not visible after application.

Benefits and Features

- 5% sodium fluoride varnish
- White varnish disappears with natural tooth color
- Thin and easy to apply
- Feels natural on the teeth
- Sets rapidly

DEVON - White Fluoride Varnish .5ml Tubes (36 per box)

Cherry	(DD-15- CH)
Mint	(DD-15- M)
Bubble Gum	(DD-15- BG)
Strawberry	(DD-15- S)
Watermelon	(DD-15- WM)



Insulates against thermal and electric shock. Provides a strong bond between dentin and restoration. Chloroform free formula of varnish and sealant

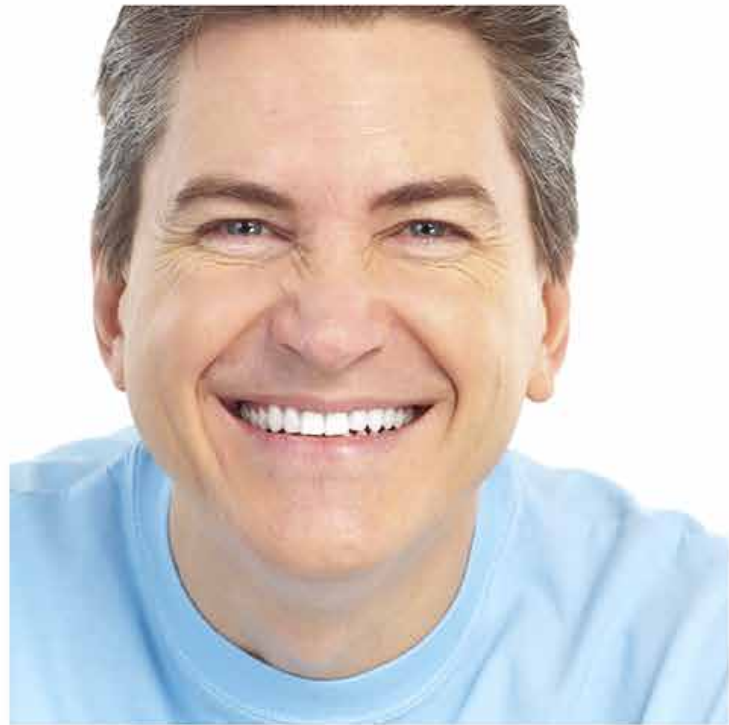
Devondent Copal Varnish & Solvent

DEVONDENT - Copal Varnish (DD-09-15)

15ml bottle

DEVONDENT - Copal Varnish Solvent (DD-10-15)

15ml bottle



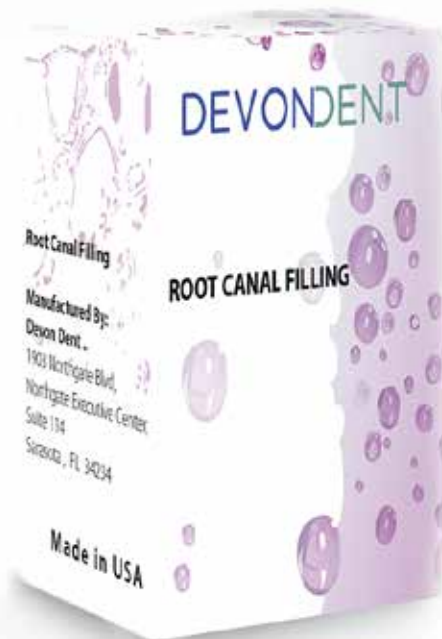
DEVONDENT

1903 Northgate Blvd,
Northgate Executive Center,
Suite 114
Sarasota , FL 34234
USA



Used by permanent obturation of root canals of teeth of the secondary dentition with or without the aid of obturation points. DEVONDENT Root Canal powder and resin are mixed to produce a silver-free material with excellent sealing properties. As a result of its close applications to the root canal walls and it's very small contraction during setting, DEVONDENT Root Canal Filling Material allows for tightly sealed root canal obturation with excellent tissue compatibility

Devondent Root Canal Filling Material



Material Kit (DD-16-8)

8g powder bottle, 10g resin tube, accessories and IFU

Devon-top

Fast acting and effective formula of 20% benzocaine. Formulated using superior quality flavorings.

DEVON-TOP features pleasant tasting during usage and leaves no bitter aftertaste

Available in 1oz. jars and 12g bottles.
DEVON-TOP Bottles.

Available in flavors :

Piña Colada	(DD-17- PC)
Bubble Gum	(DD-17- BG)
Fruit Punch	(DD-17- FP)
Cherry	(DD-17- CH)
Mint	(DD-17- M)
Strawberry	(DD-17- S)
Raspberry	(DD-17- R)
Grape	(DD-17- G)



Devondent Automix Dual Core Build-Up Material



A composite based core material designed for the easy fabrication of core build-ups. The core material is a dual cure, fluoride releasing resin core material.

Dispensed with an applicator gun and auto mixed in mixing cannulas providing a consistent, homogeneous mix. Intra oral application tips are provided for precise, direct placement of core material.

Available in a contrast blue shade which is easily distinguishable from tooth structure and natural (A2) shade for optimum results beneath ceramic crowns.

The core material releases fluoride to help reduce secondary caries. Dual curing and quick setting eliminating time consuming layering of material and allowing for easy bulk fill. Highly radiopaque and exhibits a short settings time without heat generation

KITS

50g automix cartridge, 20 yellow mixing tips, 20 yellow intra oral tips and IFU **A2 (DD-18-50A)**

50g automix cartridge, 20 yellow mixing tips, 20 yellow intra oral tips and IFU **BLUE (DD-18-50B)**

Devondent Chemical Cure Core Build-Up Material



Available in shades :

White

Blue

Natural A2

A composite based core material designed for the easy fabrication of core build-ups. A highly radiopaque, high compressive strength material. The non-slumping consistency allows the material to be applied directly into the preparation.

The viscosity is ideal for pre-fabricated post cementation and crown and bridge relining. Easily distinguishable from tooth structure by it's distinctive white, blue or natural color.

KITS

DEVONDENT - Chemical Cure Core Build-Up Material Kits

(15g catalyst paste jar, 15g base paste jar, spatulas and IFU) White **(DD-19- W)**

(15g catalyst paste jar, 15g base paste jar, spatulas and IFU) Blue **(DD-19- B)**

(15g catalyst paste jar, 15g base paste jar, spatulas and IFU) A2 **(DD-19- A2)**

A composite based core material designed for the easy fabrication of core build-ups. Auto mixed within mixing cannulas providing a consistent, homogeneous mix. Intra oral application tips are provided for precise, direct placement of core material.

Available in a contrast blue shade which is easily distinguishable from tooth structure and a natural (A2) shade for optimum results beneath ceramic crowns. The core material releases fluoride to help reduce secondary caries.

Dual curing and quick setting eliminating time consuming layering of material and allowing for easy bulk fill. Highly radiopaque and exhibits a short setting time without high heat generation.

Devon Core - Automix Syringe



DC Automix Syringe Kits

4 x 10g syringes, 20 mixing tips, 20 intra oral tips and IFU A2	(DD-20- 4A)
2 x 10g syringes, 10 mixing tips, 10 intra oral tips and IFU A2	(DD-20- 2A)
10g syringe, 10 mixing tips, 10 intra oral tips and IFU A2	(DD-20- 1A)
4 x 10g syringes, 20 mixing tips, 20 intra oral tips and IFU BLUE	(DD-20- 4B)
2 x 10g syringes, 10 mixing tips, 10 intra oral tips and IFU BLUE	(DD-20- 2B)
10g syringe, 10 mixing tips, 10 intra oral tips and IFU BLUE	(DD-20- 1B)
10g syringe A2	(DD-20- R1A)
10g syringe BLUE	(DD-20- R1B)

A highly filled composite specifically formulated for core build-ups. Available in blue or natural A2 shades. The distinctive blue color aids in distinguishing the core material from the tooth structure. A 6-7mm depth of cure can be obtained.

The blue core is best suited under metal crowns and the natural shade for all other applications. Radiopaque for easy identification in radiographs and has high viscosity for easy build-up with no slumping

Devondent Light Cure Core Build-Up Material

KITS

5g BLUE	(DD-21- 5B)
5g NATURAL (A2)	(DD-21- 5A)

Devon Dent ..

1903 Northgate Blvd,
Northgate Executive Center,
Suite 114
Sarasota , FL 34234
USA